

Town of Whitefield

MNAP Exemplary Communities, IF&W Rare Animal Occurrences, Atlantic Salmon Habitat and USFWS Trust Species Habitat

Atlantic Salmon Habitat (USFWS)

- Spawning
- Rearing

USFWS Gulf of Maine Watershed Analysis

Habitat in top 25% > 5 Acres

- Freshwater wetlands
- Grasslands
- Upland forest

IF&W Rare Animal Occurrences

- ▲ Brook floater
- New England bluet
- Wood turtle
- Rare Animal Buffer

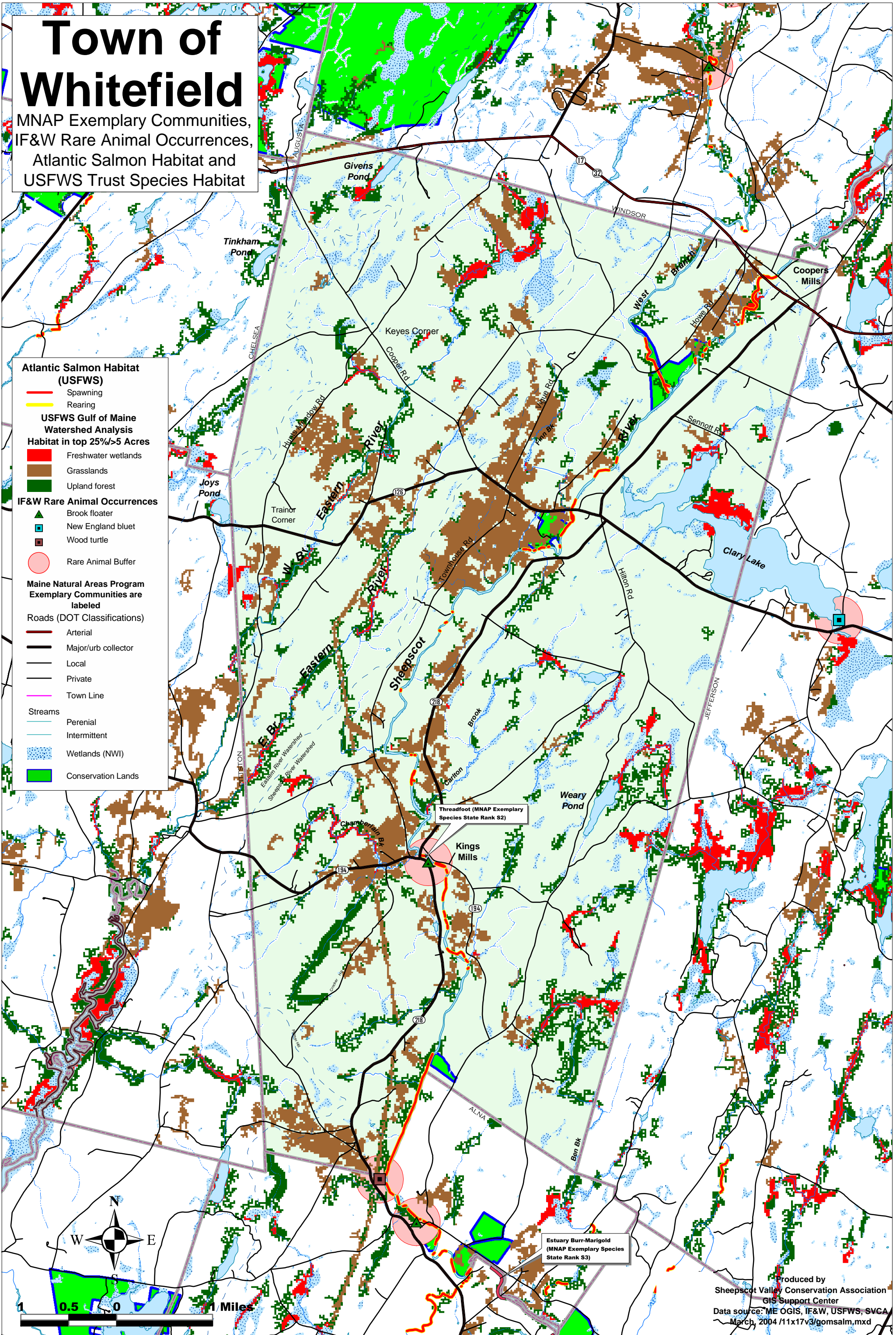
Maine Natural Areas Program Exemplary Communities are labeled

Roads (DOT Classifications)

- Arterial
- Major/urb collector
- Local
- Private
- Town Line

Streams

- Perennial
- Intermittent
- Wetlands (NWI)
- Conservation Lands



Threadfoot (MNAP Exemplary Species State Rank S2)

Estuary Burr-Marigold (MNAP Exemplary Species State Rank S3)

